



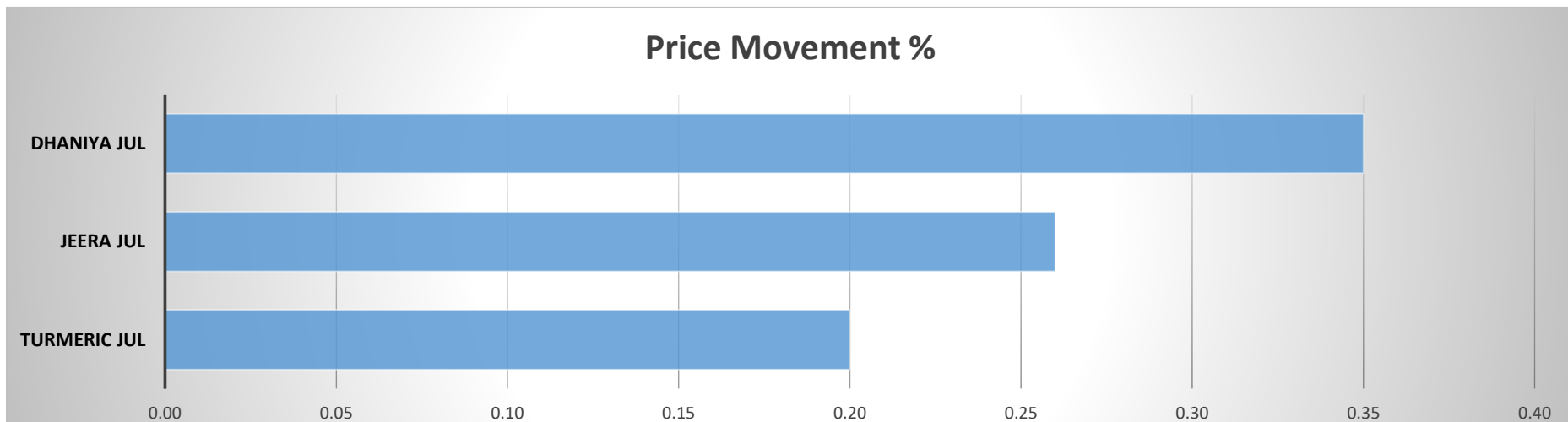
Spices Report

- Turmeric
- Jeera
- Dhaniya



Daily Snapshot												
Commodity	Open	High	Low	Close	Rs.Chg	% Chg	Spot	Vol	OI	OI % Chg	Fut-Spot	OI STATUS
Turmeric Jul	8014.00	8068.00	7974.00	8024.00	16.00	0.20	8204.45	1685	16720	1.67	-180.45	Fresh Buying
Jeera Jul	21295.00	21400.00	21240.00	21340.00	55.00	0.26	21405.05	684	14337	-0.02	-65.05	Short Covering
Dhaniya Jul	11284.00	11456.00	11284.00	11372.00	40.00	0.35	11463.70	1235	16445	0.67	-91.70	Fresh Buying

Commodity	Daily Levels								Trend	Performance			
	Close	Res - 3	Res - 2	Res - 1	Pivot	Sup - 1	Sup - 2	Sup - 3		1 Week	1 Month	3 Month	1 Year
Turmeric Jul	8024.00	8164.00	8116.00	8070.00	8022.00	7976.00	7928.00	7882.00	Positive	0.22	-4.33	-8.32	4.31
Jeera Jul	21340.00	21570.00	21485.00	21410.00	21325.00	21250.00	21165.00	21090.00	Positive	-0.59	-0.52	-1.26	35.28
Dhaniya Jul	11372.00	11630.00	11543.00	11458.00	11371.00	11286.00	11199.00	11114.00	Positive	-0.30	-3.15	4.84	40.44



DAILY TURMERIC SYNOPSIS

Expiry	Open	High	Low	Close	Rs.Chg	% Chg	Spot	Vol	OI	OI % Chg	Fut-Spot	OI STATUS
20 JUL 2022	8014.00	8068.00	7974.00	8024.00	16.00	0.20	8204.45	1685	16720	1.67	-180.45	Fresh Buying
17 AUG 2022	8156.00	8158.00	8118.00	8138.00	28.00	0.35	8204.45	250	185	516.67	-66.45	Fresh Buying
20 SEP 2022	0.00	0.00	0.00	0.00	0.00	0.00	8204.45	0	0	0.00	-8204.45	Long Liquidation

- Turmeric trading range for the day is 7928-8116.
- Turmeric gains amid improving buying by bulk traders amid good domestic demand is supported prices.
- However, reports of sufficient stocks and good sowing progress in south India limited the upside.
- Turmeric exports in Mar 2022 jumped higher 27.4% y/y at 15,750 tonnes vs 12,360 tonnes
- In Nizamabad, a major spot market in AP, the price ended at 8204.45 Rupees gained 10.5 Rupees.

CHART



TECHNICALS

Simple Moving Average						
5 Days	10 Days	20 Days	50 Days	100 Days	200 Days	
8144	8105	8162	8637	9180	8643	
SELL	BUY	SELL	SELL	SELL	SELL	
Exponential Moving Average						
5 Days	10 Days	20 Days	50 Days	100 Days	200 Days	
8139	8137	8209	8521	8731	8582	
SELL	SELL	SELL	SELL	SELL	SELL	
Spread						
Month	Rate	JUL	AUG	SEP		
JUL	8024		114	-8024		
AUG	8138			-8138		
SEP	0					

DAILY JEERA SYNOPSIS

Expiry	Open	High	Low	Close	Rs.Chg	% Chg	Spot	Vol	OI	OI % Chg	Fut-Spot	OI STATUS
20 JUL 2022	21295.00	21400.00	21240.00	21340.00	55.00	0.26	21405.05	684	14337	-0.02	-65.05	Short Covering
18 AUG 2022	21480.00	21480.00	21480.00	21480.00	10.00	0.05	21405.05	42	219	21.67	74.95	Fresh Buying
20 SEP 2022	0.00	0.00	0.00	0.00	0.00	0.00	21405.05	0	0	0.00	-21405.05	Long Liquidation

- Jeera trading range for the day is 21165-21485.
- Jeera gained because of lower production of the spice in the country, partly because many farmers shifted to more lucrative commodities.
- In Rajasthan, the new crop of cumin in the current year has come only 60% i.e. around 30 lakh bags as compared to last year.
- Export demand for cumin seeds is expected to increase for the rest of the season due to reports of very low harvests in Turkey, Syria and Afghanistan.
- In Unjha, a key spot market in Gujarat, jeera edged down by -89.7 Rupees to end at 21405.05 Rupees per 100 kg.

CHART



TECHNICALS

Simple Moving Average

5 Days	10 Days	20 Days	50 Days	100 Days	200 Days
21375	21380	21669	21992	21337	18571
SELL	SELL	SELL	SELL	BUY	BUY

Exponential Moving Average

5 Days	10 Days	20 Days	50 Days	100 Days	200 Days
21360	21423	21555	21601	20861	19210
SELL	SELL	SELL	SELL	BUY	BUY

Spread

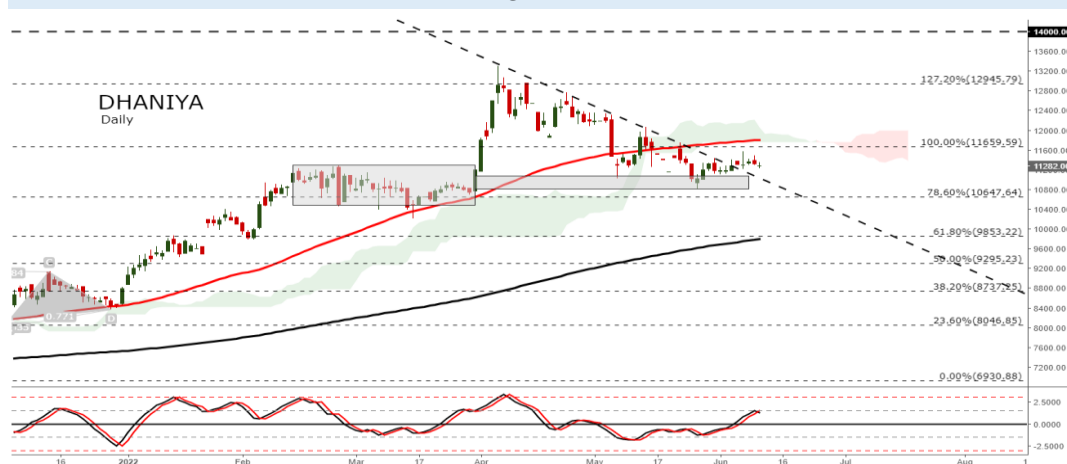
Month	Rate	JUL	AUG	SEP
JUL	21340		140	-21340
AUG	21480			-21480
SEP	0			

DAILY DHANIYA SYNOPSIS

Expiry	Open	High	Low	Close	Rs.Chg	% Chg	Spot	Vol	OI	OI % Chg	Fut-Spot	OI STATUS
20 JUL 2022	11284.00	11456.00	11284.00	11372.00	40.00	0.35	11366.25	1235	16445	0.67	5.75	Fresh Buying
16 AUG 2022	11462.00	11568.00	11462.00	11506.00	32.00	0.28	11366.25	175	575	22.34	139.75	Fresh Buying
20 SEP 2022	0.00	0.00	0.00	0.00	0.00	0.00	11366.25	0	0	0.00	-11366.25	Long Liquidation

- Dhaniya trading range for the day is 11199-11543.
- Dhaniya gained as steady exports and lower crop estimates have supported the markets.
- 17 to 18 lakh sacks of coriander are yet to arrive, out of which 9 months of the season are yet to come
- At present, 7 to 8 thousand bags are coming daily in the mandis of Gujarat, against an average of 10 to 12 thousand bags of daily trade.
- In Kota spot market in Rajasthan the prices dropped -56 Rupees to end at 11366.25 Rupees per 100 kg.

CHART



TECHNICALS

Simple Moving Average

5 Days	10 Days	20 Days	50 Days	100 Days	200 Days
11417	11375	11437	11900	11308	9915
SELL	SELL	SELL	SELL	BUY	BUY

Exponential Moving Average

5 Days	10 Days	20 Days	50 Days	100 Days	200 Days
11396	11400	11479	11536	11116	10153
SELL	SELL	SELL	SELL	BUY	BUY

Spread

Month	Rate	JUL	AUG	SEP
JUL	11372		134	-11372
AUG	11506			-11506
SEP	0			

TURMERIC PRICE MOVEMENT SINCE 2018

Year	Prices & Arrivals (Tonnes)	Harvesting				MAY	Sowing		Growth					Total Arrivals	Growth
		JAN	FEB	MAR	APR		JUN	JUL	AUG	SEP	OCT	NOV	DEC		
2018	Future	7,314.0	6,628.0	6,694.0	7,214.0	7,192.0	7,290.0	7,312.0	6,868.0	6,770.0	6,796.0	6,502.0	6,740.0	438,323.33	-1102.00
	% Change	-6.73	-9.38	1.00	7.77	-0.30	1.36	0.30	-6.07	-1.43	0.38	-4.33	3.66		-14.05%
	Spot	7,319.3	6,800.0	6,655.0	6,963.8	7,321.5	7,475.0	7,420.0	7,048.1	6,900.0	7,087.5	7,038.6	7,091.6		-9.66%
	Arrivals	14,013.1	44,172.7	83,899.7	127,003.8	54,349.3	25,265.5	19,202.2	16,935.9	13,314.8	17,586.9	12,796.8	9,782.6		
2019	Future	6,398.0	6,238.0	6,656.0	6,438.0	7,455.0	6,320.0	6,800.0	6,780.0	6,144.0	6,160.0	5,700.0	6,562.0	563,276.23	-178.00
	% Change	-5.07	-2.50	6.70	-3.28	15.80	-15.22	7.59	-0.29	-9.38	0.26	-7.47	15.12		-2.64%
	Spot	6,712.5	6,285.0	6,025.0	6,400.0	6,720.5	6,479.5	6,646.4	6,654.4	6,300.0	6,200.0	5,968.8	6,250.0		-11.87%
	Arrivals	15,536.5	43,583.3	68,183.8	92,161.9	126,154.4	67,453.0	52,668.7	37,495.9	24,484.3	10,408.7	13,553.6	11,592.3		
2020	Future	5,956.0	6,000.0	5,802.0	5,436.0	5,284.0	5,752.0	5,764.0	6,148.0	5,776.0	5,828.0	5,536.0	5,924.0	273,526.50	-638.00
	% Change	-9.23	0.74	-3.30	-6.31	-2.80	8.86	0.21	6.66	-6.05	0.90	-5.01	7.01		-9.72%
	Spot	5,967.9	5,800.0	5,587.5	5,368.8	5,200.0	5,550.0	5,478.4	5,670.5	5,550.0	5,677.3	5,565.8	5,562.5		-11.00%
	Arrivals	15,240.0	32,689.6	39,971.4	5,529.2	34,688.7	56,204.8	28,034.1	17,663.3	16,505.1	8,332.6	9,352.9	9,314.8		
2021	Future	6,554.0	8,302.0	8,490.0	7,804.0	7,798.0	7,312.0	7,370.0	8,022.0	7,318.0	7,274.0	7,512.0	8,984.0	384,875.46	3060.00
	% Change	10.63	26.67	2.26	-8.08	-0.08	-6.23	0.79	8.85	-8.78	-0.60	3.27	19.60		51.65%
	Spot	6,309.1	7,577.8	7,726.5	7,646.9	7,603.0	7,325.0	7,333.0	7,618.8	7,230.7	7,129.1	7,428.4	8,090.5		45.45%
	Arrivals	9,164.4	39,078.6	114,189.8	60,331.9	18,171.0	42,420.9	23,256.9	21,446.7	15,758.5	8,950.7	12,510.4	19,595.8		
2022	Future	10,028.0	9,358.0	8,774.0	8,510.0	7,918.0								323,271.67	-1066.00
	% Change	11.62	-6.68	-6.24	-3.01	-6.96									-11.87%
	Spot	9,430.0	9,145.0	8,690.0	8,606.1	8,274.2									2.27%
	Arrivals	12,926.2	57,272.6	120,434.8	98,041.6	34,596.4									
Average	% Change	0.24	1.77	0.08	-2.58	1.13	-2.81	2.22	2.29	-6.41	0.24	-3.38	11.35	0.35	Average

JEERA PRICE MOVEMENT SINCE 2018

Year	Prices & Arrivals (Tonnes)	Harvesting								Sowing		Growth		Total Arrivals	Growth
		FEB	MAR	APR	MAY	JUN	JUL	AUG	SEP	OCT	NOV	DEC	JAN		
2018/19	Future	15,135.0	15,010.0	15,710.0	16,195.0	18,670.0	20,390.0	19,545.0	18,930.0	20,980.0	18,640.0	17,685.0	15,965.0	243,317.02	-870.00
	% Change	-10.10	-0.83	4.66	3.09	15.28	9.21	-4.14	-3.15	10.83	-11.15	-5.12	-9.73		-5.17%
	Spot	17,284.2	15,860.5	15,850.0	16,129.5	18,350.0	19,734.8	19,543.8	19,260.7	20,003.4	19,291.4	18,078.9	17,094.4		-13.28%
	Arrivals	30,157.8	51,038.1	30,023.8	22,015.8	15,962.0	10,445.0	14,905.9	7,996.1	22,123.3	16,492.2	10,581.3	11,575.8		
2019/20	Future	15,440.0	15,735.0	16,944.0	17,540.0	17,155.0	17,725.0	16,920.0	17,165.0	16,405.0	16,285.0	16,245.0	14,100.0	450,377.83	-1865.00
	% Change	-3.29	1.91	7.68	3.52	-2.19	3.32	-4.54	1.45	-4.43	-0.73	-0.25	-13.20		-11.68%
	Spot	16,327.5	15,811.1	16,961.1	17,450.0	17,350.0	17,783.3	17,330.0	16,965.4	16,643.8	16,516.7	16,425.0	15,100.0		-11.67%
	Arrivals	16,691.4	70,494.9	79,547.3	38,125.6	20,649.8	34,008.2	30,286.7	32,213.7	34,566.0	43,220.6	29,685.5	20,888.1		
2020/21	Future	13,680.0	14,100.0	13,645.0	13,560.0	13,645.0	14,115.0	14,240.0	13,730.0	14,465.0	13,805.0	12,665.0	13,435.0	374,520.01	-665.00
	% Change	-2.98	3.07	-3.23	-0.62	0.63	3.44	0.89	-3.58	5.35	-4.56	-8.26	6.08		-4.72%
	Spot	13,903.5	13,655.5	13,960.0	13,653.8	13,805.3	14,050.0	13,990.0	13,639.5	13,966.7	13,887.5	13,040.6	13,105.5		-13.21%
	Arrivals	18,327.9	64,497.2	13,634.6	54,254.5	64,472.7	32,930.3	22,051.0	23,641.3	25,670.5	18,666.7	19,131.6	17,241.9		
2021/22	Future	13,475.0	14,710.0	13,900.0	13,765.0	13,380.0	13,285.0	14,440.0	14,630.0	14,965.0	15,980.0	16,200.0	19,465.0	363,058.95	6030.00
	% Change	0.30	9.17	-5.51	-0.97	-2.80	-0.71	8.69	1.32	2.29	6.78	1.38	20.15		44.88%
	Spot	13,227.8	14,316.7	14,054.5	13,980.0	13,668.4	13,641.2	14,741.2	14,616.7	14,700.0	16,028.5	16,081.8	19,085.0		45.63%
	Arrivals	25,149.9	111,544.0	41,686.4	12,146.8	28,379.5	18,943.6	19,087.8	12,524.6	24,323.6	29,360.5	20,789.9	19,122.3		
2022/23	Future	21,150.0	21,530.0	21,885.0	21,195.0									113,056.52	1730.00
	% Change	8.66	1.80	1.65	-3.15										8.89%
	Spot	20,988.3	21,215.8	21,792.5	21,418.4										12.23%
	Arrivals	25,081.6	32,923.1	35,908.3	19,143.6										
Average	% Change	-1.48	3.02	1.05	0.37	2.73	3.82	0.22	-0.99	3.51	-2.42	-3.06	0.83	0.63	Average

DHANIYA PRICE MOVEMENT SINCE 2018

Year	Prices & Arrivals (Tonnes)	Harvesting								Sowing			Growth		Total Arrivals	Growth
		FEB	MAR	APR	MAY	JUN	JUL	AUG	SEP	OCT	NOV	DEC	JAN			
2018/19	Future	5,601.0	5,068.0	4,760.0	4,384.0	4,750.0	5,175.0	5,055.0	4,992.0	6,067.0	6,468.0	6,353.0	6,605.0	491,453.63	565.00	
	% Change	-7.27	-9.52	-6.08	-7.90	8.35	8.95	-2.32	-1.25	21.53	6.61	-1.78	3.97		9.35%	
	Spot	5,412.5	5,344.4	5,172.0	4,996.3	5,090.1	5,376.3	5,037.3	4,995.5	5,734.4	6,300.6	6,269.4	6,255.5		12.99%	
	Arrivals	71,695.6	96,355.4	66,278.8	52,670.9	27,648.5	18,627.6	24,930.3	29,198.0	31,864.9	24,340.2	28,299.8	19,543.5			
2019/20	Future	6,160.0	6,656.0	7,184.0	7,006.0	6,970.0	6,529.0	5,974.0	5,590.0	6,835.0	6,695.0	6,860.0	6,498.0	428,252.11	-107.00	
	% Change	-6.74	8.05	7.93	-2.48	-0.51	-6.33	-8.50	-6.43	22.27	-2.05	2.46	-5.28		-1.62%	
	Spot	6,089.5	6,626.0	7,450.9	7,762.9	7,391.0	7,138.5	6,572.8	6,226.9	6,888.3	6,960.7	7,084.4	6,643.6		6.21%	
	Arrivals	44,670.7	97,189.8	73,258.9	40,939.0	23,735.8	22,634.6	13,166.0	16,219.3	23,146.6	42,262.2	15,280.1	15,749.1			
2020/21	Future	5,922.0	5,820.0	5,798.0	5,620.0	6,280.0	6,350.0	6,974.0	6,792.0	6,742.0	6,370.0	5,862.0	6,188.0	368,271.70	-310.00	
	% Change	-8.86	-1.72	-0.38	-3.07	11.74	1.11	9.83	-2.61	-0.74	-5.52	-7.97	5.56		-4.77%	
	Spot	6,024.0	5,997.3	6,280.0	5,966.6	6,393.2	6,446.3	6,906.6	6,729.1	6,724.0	6,329.1	6,062.5	6,000.0		-9.69%	
	Arrivals	23,458.0	68,620.2	18,676.6	54,671.3	51,882.8	33,247.7	15,149.5	30,129.1	21,630.4	17,298.5	16,753.9	16,753.9			
2021/22	Future	7,176.0	7,104.0	6,746.0	6,886.0	6,738.0	6,848.0	8,128.0	7,860.0	8,074.0	8,552.0	8,584.0	10,100.0	418,555.05	3912.00	
	% Change	15.97	-1.00	-5.04	2.08	-2.15	1.63	18.69	-3.30	2.72	5.92	0.37	17.66		63.22%	
	Spot	6,982.1	7,176.5	6,934.6	7,136.3	6,948.8	7,050.6	7,879.8	7,842.9	7,980.0	8,555.5	8,734.2	9,598.9		59.98%	
	Arrivals	62,177.4	127,365.3	50,011.7	16,501.5	36,626.0	15,675.7	13,932.0	17,261.7	19,645.4	20,408.5	20,068.8	18,881.2			
2022/23	Future	10,902.0	11,196.0	12,180.0	11,178.0									206,779.84	1078.00	
	% Change	7.94	2.70	8.79	-8.23										10.67%	
	Spot	10,591.0	10,400.0	12,100.2	11,365.3										18.40%	
	Arrivals	42,639.6	82,573.2	56,746.1	24,820.9											
Average	% Change	0.21	-0.30	1.05	-3.92	4.36	1.34	4.42	-3.40	11.45	1.24	-1.73	5.48	1.68	Average	

GENERAL DISCLAIMERS

KEDIA ADVISORY

This Report is prepared and distributed by Kedia Stocks & Commodities Research Pvt Ltd. for information purposes only. The recommendations, if any, made herein are expression of views and/or opinions and should not be deemed or construed to be neither advice for the purpose of purchase or sale through KSCRPL nor any solicitation or offering of any investment /trading opportunity. These information / opinions / views are not meant to serve as a professional investment guide for the readers. No action is solicited based upon the information provided herein. Recipients of this Report should rely on information/data arising out of their own investigations. Readers are advised to seek independent professional advice and arrive at an informed trading/investment decision before executing any trades or making any investments. This Report has been prepared on the basis of publicly available information, internally developed data and other sources believed by KSCRPL to be reliable. KSCRPL or its directors, employees, affiliates or representatives do not assume any responsibility for, or warrant the accuracy, completeness, adequacy and reliability of such information / opinions / views. While due care has been taken to ensure that the disclosures and opinions given are fair and reasonable, none of the directors, employees, affiliates or representatives of KSCRPL shall be liable for any direct, indirect, special, incidental, consequential, punitive or exemplary damages, including lost profits arising in any way whatsoever from the information / opinions / views contained in this Report. The possession, circulation and/or distribution of this Report may be restricted or regulated in certain jurisdictions by appropriate laws. No action has been or will be taken by KSCRPL in any jurisdiction (other than India), where any action for such purpose(s) is required. Accordingly, this Report shall not be possessed, circulated and/ or distributed in any such country or jurisdiction unless such action is in compliance with all applicable laws and regulations of such country or jurisdiction. KSCRPL requires such recipient to inform himself about and to observe any restrictions at his own expense, without any liability to KSCRPL. Any dispute arising out of this Report shall be subject to the exclusive jurisdiction of the Courts in India.

For more details, please **contact:**

 +91 9323406035 / 9619551022

 info@kediaadvisory.com

 www.kediaadvisory.com

KEDIA STOCKS & COMMODITIES RESEARCH PVT LTD.
Mumbai, IN.

SEBI REGISTRATION NUMBER - INH000006156

